

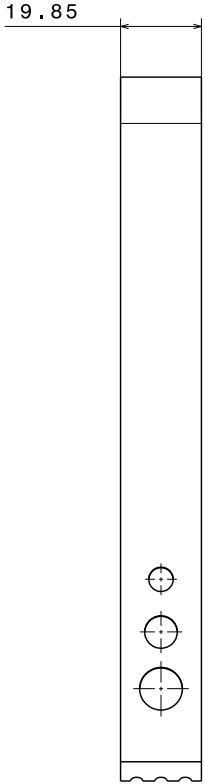
# ICE TONGS IT800

**Branding**

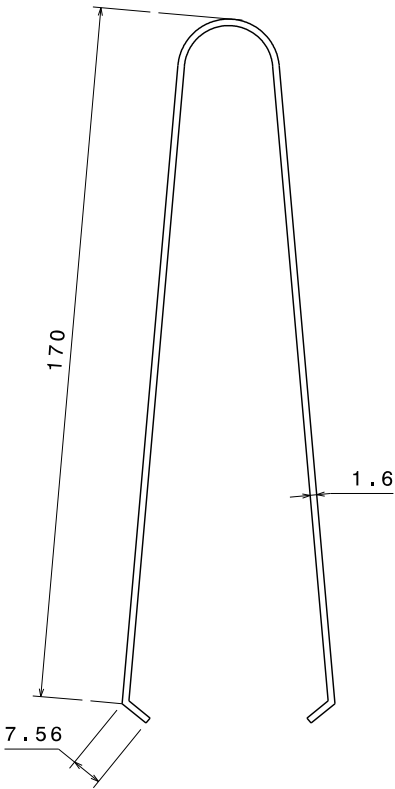
Permanent laser branding dimension.



	IT800
Dimensions mm (Dia x H)	185 x 20
Weight g	86



Front view  
Scale: 1:1



Left view  
Scale: 1:1

**Long-Life Durability**

Manufactured from food grade stainless steel.



**Friendly Wash**

Dishwasher proof for endless wash cycles.



Branded Tumblers & Barware  
design@brym-uk.com  
01726 256890